

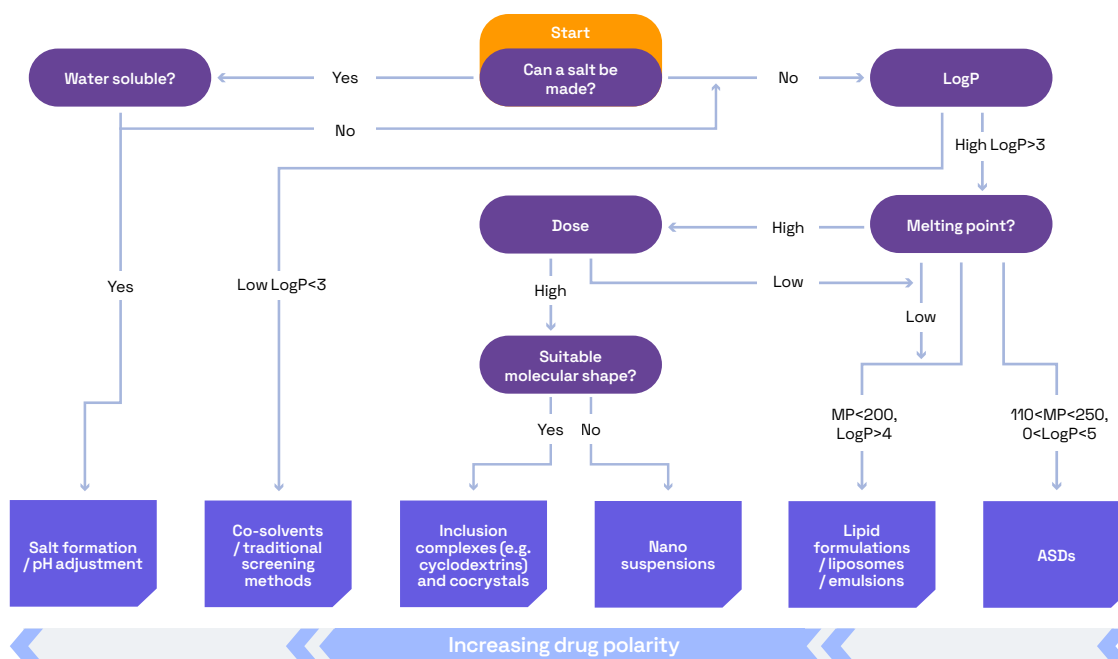
Pharmorphix® Enabling Formulation

Data-Driven Approach to Accelerating Drug Development

Selecting the right formulation pathway is critical for the success of any pharmaceutical compound, especially for those with complex solubility or stability challenges. At Pharmorphix, a Veranova brand, our Enabling Formulation offering is designed to identify the best formulation route based on physicochemical properties, desired outcome, and target administration.

A Streamlined Approach to Formulation Success

Our guidance workflow, which was developed in-house, enables rapid, data-driven decision making, ensuring formulation strategies have the greatest chance of success. [See our guidance workflow below:](#)



◀ Approximately 40% of drug failure can be attributed to poor pharmacokinetics.¹ ▶

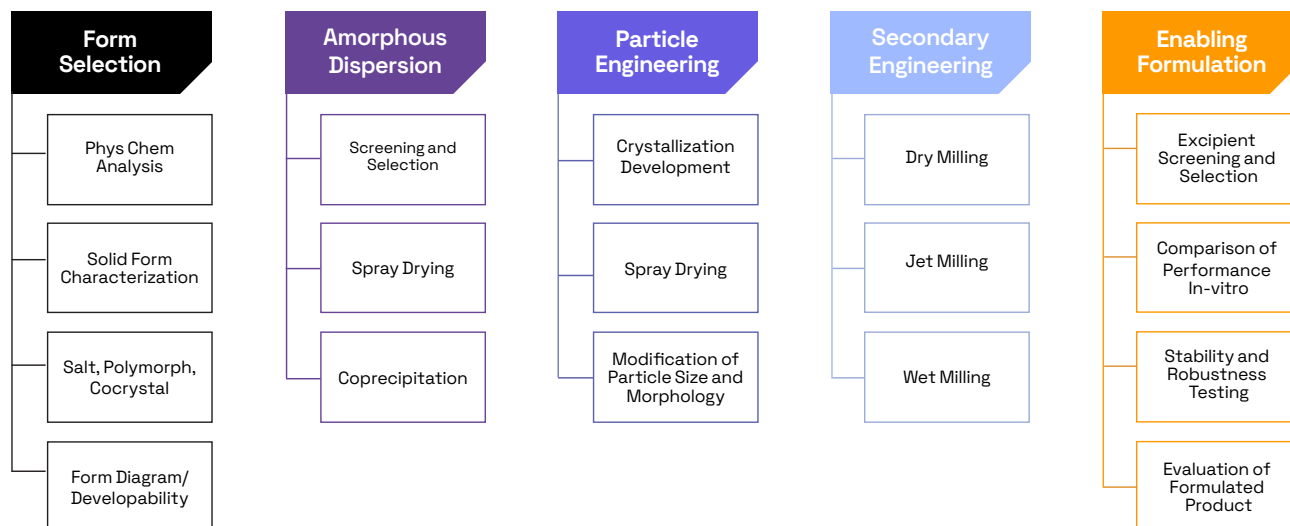
Achieving Solid Form and Particle Engineering Success

With 20 years of expertise in solid-form analysis and particle engineering, we:

- Identify optimal formulation pathways based on a compound's physicochemical properties and target administration route.
- Develop preclinical prototypes to assess and optimize performance early in the development process.
- Compare new solid forms and formulations to maximize stability, solubility, and bioavailability.



Solid Form and Particle Engineering



Key Benefits of Working with Pharmorphix

We work to support you with both early and lead candidate selection, and identifying potential formulation routes, enabling:

- **Early Candidate Selection & Risk Mitigation:**

Our Pre-Candidate Selection Package requires just 150 mg of material and utilizes parallel screening to identify viable formulation pathways and eliminate non-viable routes early - reducing risk and accelerating decision-making. We can compare the in-vitro performance of new forms and prototype formulations to help select optimal forms for further development.

- **Cost-Effective, Accelerated Development:**

By selecting the optimal drug candidate at an early stage, we help minimize late-stage failures, shorten development timelines, and lower overall costs.

- **Advanced Solubility-Enhancing Strategies:**

For poorly soluble APIs, we enhance bioavailability using amorphous solid dispersions (ASDs), nanosuspensions, co-solvents, and lipid-based formulations - enhancing drug absorption and dissolution rates.

- **In-House Advantage:**

From lead candidate selection to prototype development, we offer a fully integrated solution delivered from a single facility.

- **Seamless Tech Transfer & Scale Up:**

Once refined, our in-house synthesis and crystallization development expertise allow us to improve parameters for scale up of proof of concept, ensuring a smooth transition to large-scale manufacturing with licensed partners.

By combining solid-state expertise, advanced formulation strategies, and streamlined tech transfer, Pharmorphix helps de-risk drug development and accelerate the path to clinical success.

By integrating solid-state characterization and formulation expertise under one roof, we ensure a smarter, faster, and more effective approach to drug development.

References:

¹ Manikandan, P., et. al., Improving Solubility and Bioavailability of Poorly Water-Soluble Drugs by Solid Dispersion Technique - A Review, Int. J. Pharm. Sci. Rev. Res., 19 23(1), Nov - Dec 2013; no 42, 220-227, <http://globalresearchonline.net/journalcontents/v23-1/42.pdf>.



Get in touch to discuss how we can support your formulation needs.

VERANOVA.COM